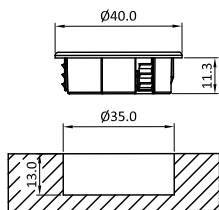


Wireless Touch Dimmer

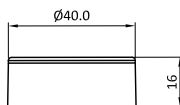
WT014 • Wireless Touch Dimmer for LED Light

Product highlights

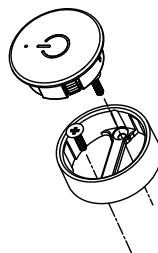
- Wireless Touch dimmer,work as a remote control
- Built-in CR3023 Cell battery,
- Easy Mounting (Recess or Surface Mount optional)
- Working with a receiver/controller



Recess Mount



Surface Mount



Specifications

Wireless communication	RF 2.4G
Working Voltage(Vdc)	3
Power Supply:	CR3032 Battery
IP class	IP20
Battery working time	~12 months
Length (mm)	40
Width (mm)	40
Depth (mm)	13(recess)/16(surface mount)
Color / Finish	Silver / Black / White

Safety

Safety Class	Class III (SELV)
CE	yes
UKCA	yes
Rohs	yes