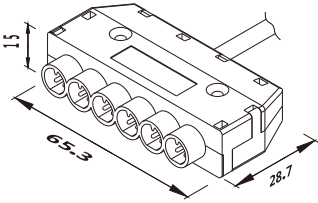
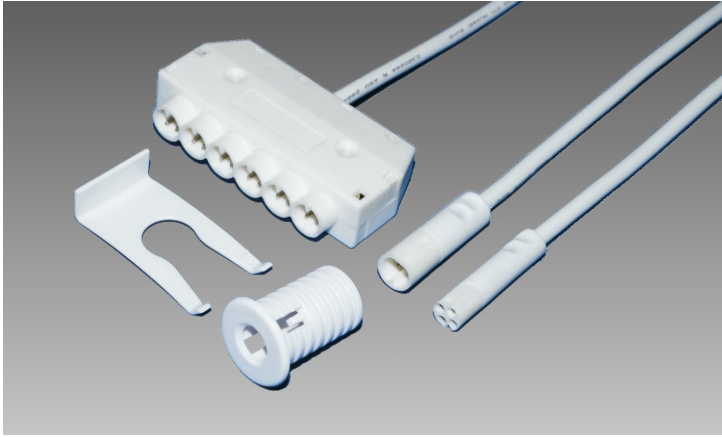


7.6mm Mini Connector System 12/24V

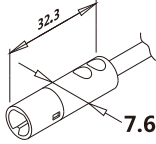
ZW006• 760 Mini Connector System

Product highlights

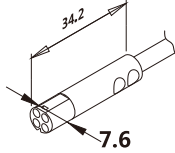
- Mini connector through $\varnothing 8\text{mm}$ hole
- Max.6A 24V (20-24AWG)
- Length customized



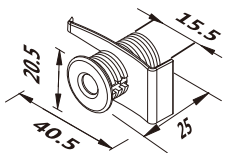
Description:6-way distributor
Art No.: 3D6



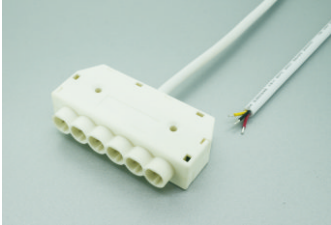
Description:Female Socket 3pin
Art No.: FS3



Description:male plug 3pin
Art No:MP3



Build-in socket



Supply Lead/6-way distributor

- 6-way distributor
- end tin
- 24V/6A
- 20AWG cable white 3C
- white



Supply Lead

- mini female socket 3pin
- max3.5 A,24V
- end tin
- 22 AWG cable white 3C
- white



Supply Lead

- mini male plug 3pin
- max3.5 A,24V
- end tin
- 22 AWG cable white 3C
- white



760BI

- white

Specifications

Rated Current(A)	6
Rated Volt(Vdc)	12-24
Wire type	20-24AWG
Wire section(sq.mm)	0.2-0.5
Wire certification	UL Listed
Material	PVC+copper
Color / Finish	White

Safety

Safety Class	Class III
CE	yes
Rohs	yes
Reach	yes